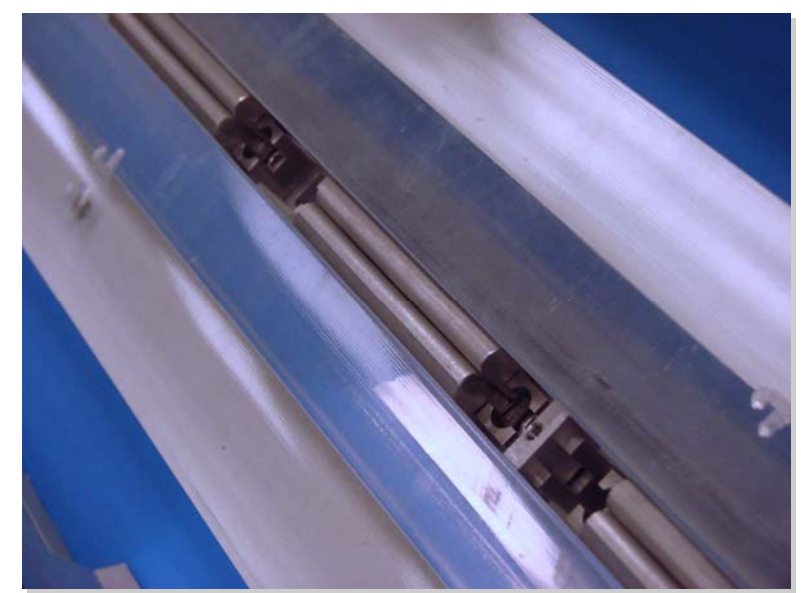


THE REGISTER & PLATE  
AUTOMATION EXPERTS



# NELA Lock-up



NELA now offers the new NELA Lock-up for web reduction from 50" to 48" to 46" (custom specification for 55" available). Our stainless steel lock-up offers you a convenient and hassle free solution in your web reduction project. With the move of the pin, you can switch from 48" to 46".

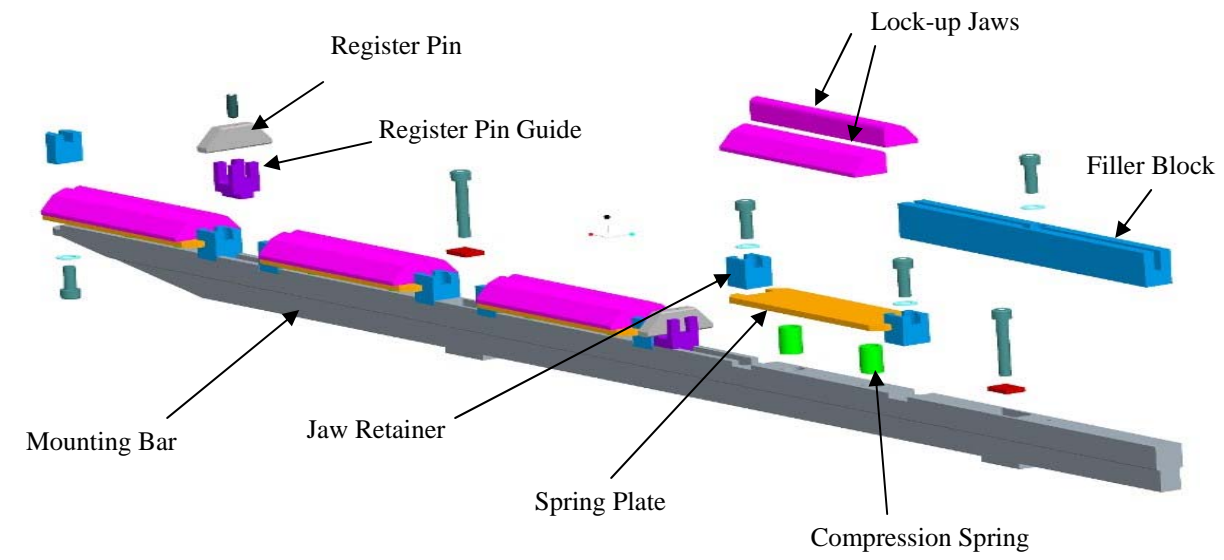
As a turnkey solution-provider, we can modify your bender to match the pin location or even adjust to a different bend angle.

We offer future-oriented solutions which don't need to be replaced when the next web reduction comes to your operation.



# Details

## Exploded view of lock:



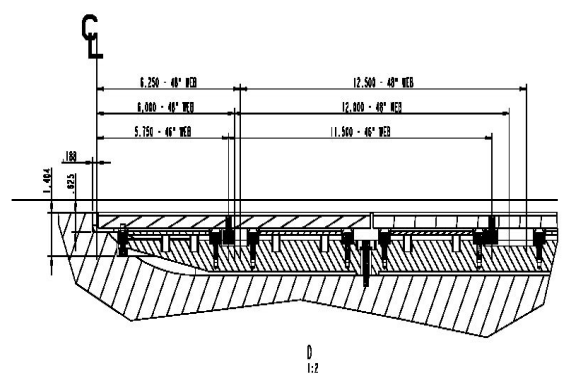
## Features:

- ⇒ Quick & easy web conversion
- ⇒ Fast & accurate plating up
- ⇒ Filler block for additional safety
- ⇒ Conversion from 48" to 46" with the move of the pin
- ⇒ Centrifugal force of the moving press securely holds the plate in the lock
- ⇒ No tool required for loading

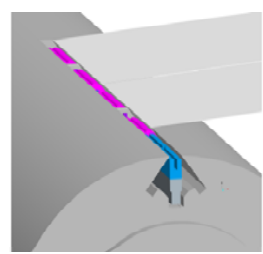
## Specifications:

- ⇒ Bender modifications available for plate size changes, pin modifications and quad-punching.
- ⇒ Bend angle and cut-off modifications available as well

## Different Pin Locations



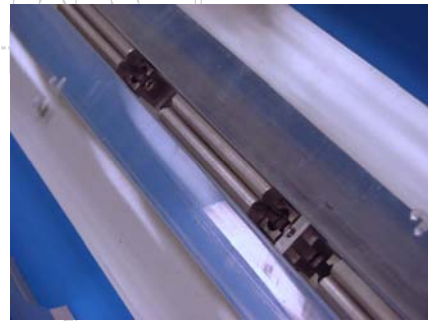
## Plate loaded in lock



7435 4th Street North • Oakdale, MN • 55128 • USA  
 Worldwide: 1-651-407-4800  
 USA/Canada Toll-Free: 1-888-407-4808  
 FAX: 1-651-407-4801  
 E-Mail: info@nela-usa.com  
 Web Site: http://www.nela-usa.com

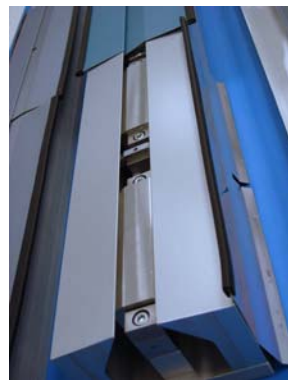
## Lock-up models:

### *NELA H/O Lock-up*



- **Web Width:** 50" - 46"
- **Cylinder Gaps:** .530"
- **Plate Size:** single & double
- **Web Reduction:** adjustable pin
- **Press Type:** Goss HO
- **More than 600 cylinders installed.**

### *NELA Metro Lock-up*



- **Web Width:** 50" - 46"
- **Cylinder Gaps:** .875"
- **Plate Size:** single & double
- **Web Reduction:** adjustable pin
- **Press Type:** Goss Metro
- **More than 400 cylinders installed.**

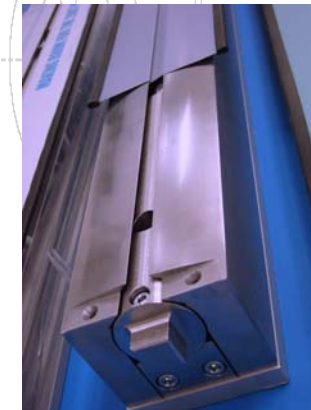
### *NELA Mitsubishi Lock-up*



- **Web Width:** 50" - 46"
- **Cylinder Gaps:** .701"
- **Plate Size:** single & double
- **Web Reduction:** adjustable pin
- **Press Type:** Mitsubishi
- **Existing steel rods don't have to come out. Over 200 cylinders installed.**

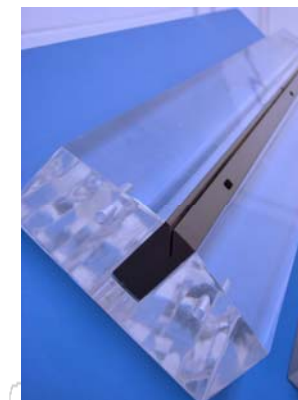
## Lock-up models:

### *NELA TKS Lock-up*



- **Web Width:** 50" - 46"
- **Cylinder Gaps:** .433"
- **Plate Size:** single & double
- **Web Reduction:** adjustable pin
- **Press Type:** TKS
- **No need for new inserts, new lock will fit in existing insert! Easy transition.**
- **More than 500 cylinders installed.**

### *NELA Slot Lock-up*



- **Web Width:** 50" - 46"
- **Cylinder Gaps:** .530" - .850"
- **Plate Size:** double-wide or single double
- **Web Reduction:** adjustable pin (only for single plate applications)
- **Press Type:** Urbanite / Community wide gap / DGM 850/ Tensor / Harris 845
- **Single lead / single tailbend.**
- **Over 1,000 cylinders installed.**

After our lock experts install the NELA Lock-ups, zero the press, and train your staff, you will be ready to see improvements on the first run. You immediately benefit from NELA's 20+ years of expertise with printing and press register. Take advantage of a NELA turnkey installation: Plate Punch/Bender, plate automation and Lock-ups from one source. Please contact the register and plate automation experts of NELA for a "Free Register" audit on your press!