



see. control. automate.



# NELA Classic II



**Semi-Automatic Bender  
3-point Edge Register  
For single & double width plates  
For single and double bend profiles**

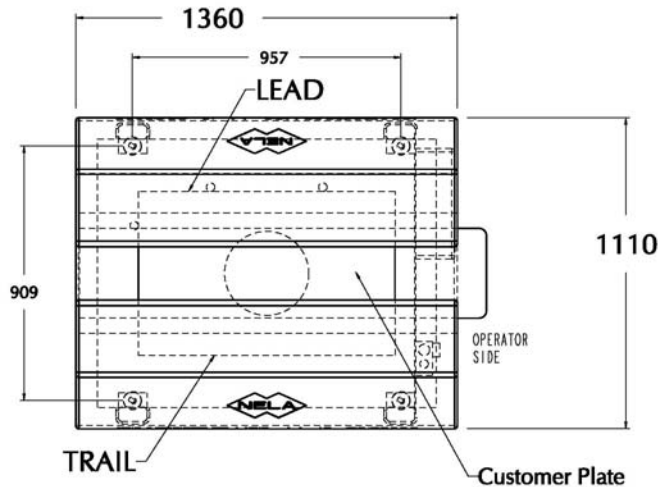


610 Whitetail Blvd • River Falls, WI • 54022 • USA  
Worldwide: 1-715-425-1900  
USA/Canada Toll-Free: 1-888-407-4808  
FAX: 1-715-425-1901  
E-Mail: [info@nela-usa.com](mailto:info@nela-usa.com)  
Web Site: [www.nela-usa.com](http://www.nela-usa.com)



# NELA Classic II

## Footprint:



## Plate Sizes:

### A) Panorama Plate:

Maximum Width 1041mm (41")  
 Minimum Width 559mm (22")

### B) Single Plate:

Maximum Width 457mm (18")  
 Minimum Width 288mm (11.38")

## Bend-to-Bend Range:

Maximum Length 609mm (24")  
 Minimum Length 533mm (21")

\*other sizes available - please check with our sales department.

The NELA Classic II Bender kicks off the new generation of the NELA Classic Bender line. This line is known for its durability, high-quality and economical price. It is a perfect match for the commercial web and newspaper printer that is seeking a reliable machine that accurately bends plates and provides reliability on press—every day, every time.

## Features:

- 3-point register
- Vacuum table to hold down plate
- For single & double width plates

## Bend options:

- Single width
- Single & double width
- Single or double bend on lead & tail
- Manual infeed
- Automatic bend on 3point contact
- Space-saving design (footprint: 1360mm (53.5") x 1110mm (44"))

## Requirements:

Power: 110VAC or 220VAC, 2 amp, single phase  
 Air: 100-120 psi, 4 CFM, 1/2" NPT, 7– 8.4 bar



610 Whitetail Blvd • River Falls, WI • 54022 • USA  
 Worldwide: 1-715-425-1900  
 USA/Canada Toll-Free: 1-888-407-4808  
 FAX: 1-715-425-1901  
 E-Mail: info@nela-usa.com  
 Web Site: www.nela-usa.com